

Sirim Of 30mm Drainage Cell Load Test.

REPORT NO : 2015JH0067

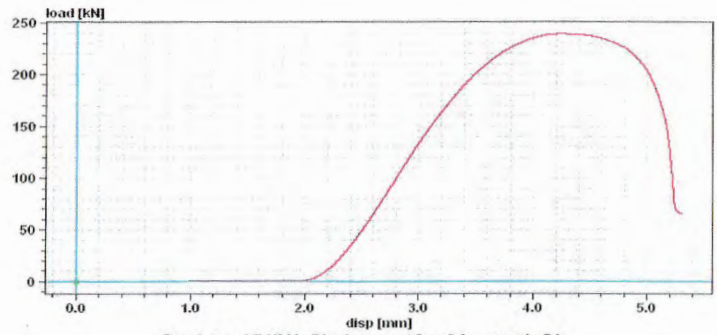
PAGE : 3 OF 3

Disclaimer

This Test Report refers only to samples submitted by the applicant to SIRIM QAS International Sdn. Bhd. and tested by SIRIM QAS International Sdn. Bhd. This Test Report shall not be reproduced, except in full and shall not be used for any purpose by any means or forms (including but not limited to advertising purposes) without written approval from the Managing Director, SIRIM QAS International Sdn. Bhd. Please refer overleaf of Page 1 for Conditions Relating to the Use of Test Report.

TEST RESULT: COMPRESSION LOAD TEST

SAMPLE REFERENCE	ULTIMATE LOAD, kN	MODE OF FAILURE	REFERENCE PHOTO
S1	239.17	The drainage cell cracked and ruptured	Figure 1.0 & 1.1



Graph Load [kN] Vs Displacement [mm] for sample S1



Figure 1.0

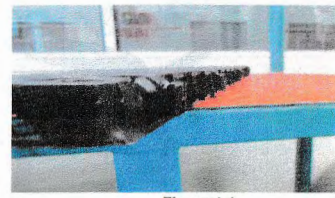
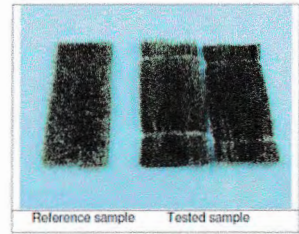


Figure 1.1

Certificate Of UV Test for Artificial Grass

Test Photo:

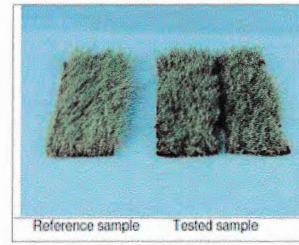


Equipment Information:

Equipment	Model	Equipment No.	Calibration date	Next Calibration date
UV Accelerated Weathering Tester	QUV-Se	GZMR-AG-E060	2015-08-12	2016-08-11
Colour Assessment Cabinet	CAC60	GZMR-AG-E003	2015-08-12	2016-08-11

Appendix information: The above test was carried out by a SGS internal laboratory.
***** End of report*****

Test Photo:



Equipment Information:

Equipment	Model	Equipment No.	Calibration date	Next Calibration date
UV Accelerated Weathering Tester	QUV-Se	GZMR-AG-E060	2015-08-12	2016-08-11
Colour Assessment Cabinet	CAC60	GZMR-AG-E003	2015-08-12	2016-08-11

Appendix information: The above test was carried out by a SGS internal laboratory.
***** End of report*****